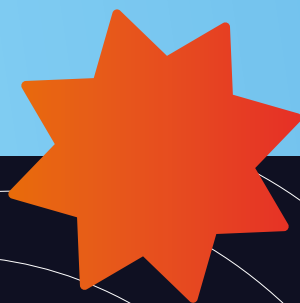


Leeds Sixth Form College





Open Events

14 September 2022

4-7pm

Online Open Event

21 September 2022

4-7pm

Pudsey Open Event

4 October 2022

4-7pm

Open Event

2 November 2022

4-7pm

Open Event

26 November 2022

10am-12pm

Open Event

18 January 2023

4-7pm

Open Event

6 March 2023

Subject Tasters

Open events allow you to find out more about available courses, life at a sixth form college and how we can support you to go further and achieve more.



for more information,
or to book on to our events,
please visit our website
leedssixthform.ac.uk/events



Principal's Welcome

At Leeds Sixth Form College, we pride ourselves on our students' journeys to success. We are driven by hard work and the strong belief that every student has the capacity to excel, regardless of their background. We offer a range of A level subjects, as well as the opportunity to combine A levels with a vocational element. We are committed to providing an exceptional experience, with outcomes to match.

A levels give you the opportunity to develop a rich and varied knowledge of academic disciplines, gain well-recognised qualifications, enter the world of work at a higher level and progress to specialised degree courses.

It's not just about your studies. Our students' wellbeing is paramount, which is why we have in place a comprehensive pastoral system that offers a wealth of additional support. This includes one-to-one support with our dedicated academic staff and Wellbeing team.

As Principal of Leeds Sixth Form College, you have my promise that we will value you, believe in you and support you to realise your full potential in a dedicated academic post-16 climate for learning. We will work with you to help you secure the best qualifications you can achieve and enable you to enjoy a range of enrichment and leadership opportunities that will help you develop your wider skills.

Rachael Booth
Principal of Leeds Sixth Form College

Mission Statement

A vibrant, innovative centre of education in the heart of a buzzing metropolis, Leeds Sixth Form College delivers first-class education that raises aspirations and drives success. We empower you to be your best self. We do this by equipping you with the skills you need to succeed today, tomorrow and beyond. Learn your way with a broad range of qualifications at a sixth form college which keeps you, the individual, at the heart of your learning experience.

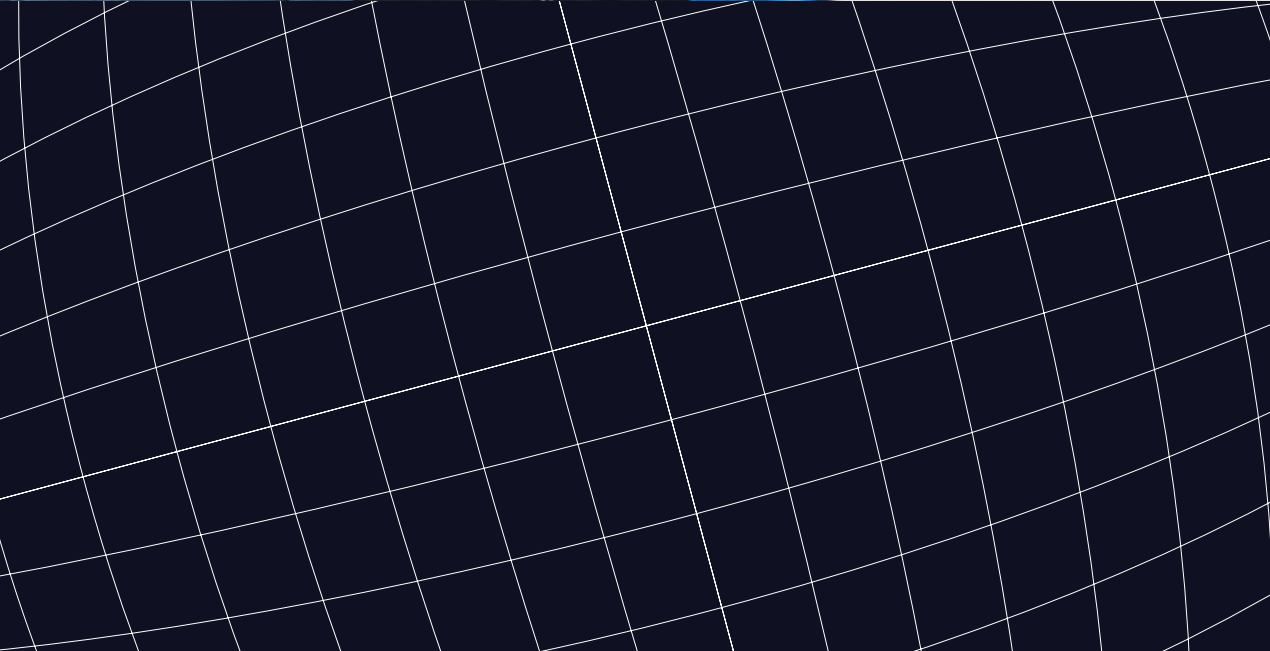
We want you to grow in confidence as well as knowledge. That's why when you complete your sixth form studies you will leave with so much more than a collection of certificates. Leeds Sixth Form College's first-rate teaching gives you the knowledge you need to progress in your subject, while super-curricular activities equip you with invaluable life skills.

With Leeds Art Gallery, Leeds City Museum and Leeds Grand Theatre all within easy walking distance, as well as numerous coffee shops and restaurants, you can explore this vibrant city without straying far from sixth form. Studying at Leeds gives you the freedom to explore your independence, while belonging to part of a supportive, educational community.

If you want fresh, innovative learning in the heart of a vibrant city, look no further than Leeds Sixth Form College. If you're ready to learn more, aim higher and go further, then we're ready to welcome you.

don't limit
yourself!





Values

1

We build independence and resilience

2

We set aspirational goals

3

We celebrate individuality

4

We share our passion for learning with the local and global community

5

We are respectful of others, our diverse community and the environment

6

We inspire success in all forms



Contents

Getting Here	12
Facilities	14
The Hub	18
Entry Requirements	20
Entry Requirements: at a glance	22
Pathways	24
Gamma Pathway	26
Sport Science & Exercise	28
Applied Science	30
The Application Process	32
Academic and Pastoral Support	35
Financial Support	36
Enrich and Excel	38
Student Safety & Relations Officers	40
Information for Parents and Guardians	42
Contact Information	45
Leeds Sports Connect	46



Course Directory	48
-------------------------	-----------

Art, Craft & Design	50
---------------------	----

Biology	52
---------	----

Business	54
----------	----

Chemistry	58
-----------	----

Computer Science	60
------------------	----

Core Maths	62
------------	----

English Language	64
------------------	----

English Literature	66
--------------------	----

Film Studies	68
--------------	----

French	70
--------	----

Further Mathematics	72
---------------------	----

Geography	74
-----------	----

History	76
---------	----

Law	78
-----	----

Maths	80
-------	----

Media Studies	82
---------------	----

Music	84
-------	----

Philosophy	86
------------	----

Physical Education	88
--------------------	----

Physics	90
---------	----

Politics	92
----------	----

Psychology	96
------------	----

Religious Studies	98
-------------------	----

Sociology	100
-----------	-----

Spanish	102
---------	-----

Getting Here



plan ahead!

Students travel from all over the region to attend Leeds Sixth Form College and access our provision. Before term starts, it's a good idea to plan the easiest and cheapest route between your home and sixth form college. Remember that travelling during rush hour can make the journey longer, as we are based in the city centre. The West Yorkshire Metro Journey Planner can help you organise your journey.





The Light

Merrion Street

New York Road

Elisgate

Victoria Gate

George Street

Leeds Kirkgate Market

Leeds Outdoor Market

Leeds Bus Station

Trinity Leeds

Leeds Corn Exchange

Duncan Street

Call Lane

Kirkgate

Bishopgate Street

Bolt Lane

Call Lane

River Aire

Facilities

We've been busy transforming areas of our campus to make way for exciting new facilities.

Fusing innovation with excellence, these dynamic spaces will allow you to learn in an inspiring and independent way.



independent learning zones (ILZs)

Subject-specific zones situated on each floor provide quiet spaces with learning resources appropriate to the subject. Staff are on hand in these spaces to help you with any queries you have.





photography studio & dark room

From setting the scene with lighting equipment and green screens, to editing the photographs, the studio is fully equipped to produce the perfect photo. Complemented with a purpose-built darkroom for developing prints, the photography studio has everything a photography student could need to succeed.

natural press coffee shop

If you fancy a break from your studies, our modern coffee shop allows you to relax in a social and eco-conscious environment.





cyber cafes

The perfect place to eat and study, our cyber cafes offer a range of food and drink, and are a more relaxing place to catch up on your studies.

auditorium & lecture theatre

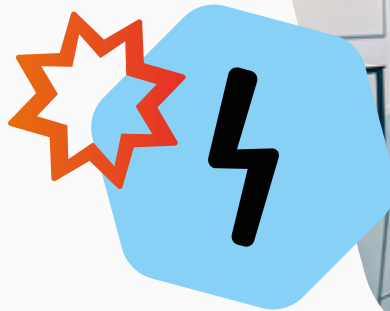
Our large, open plan auditorium and lecture theatre have been specially designed for assemblies, exams, external guest speakers, enrichment activities and the campus engagement programme.





gym facilities

Fully air-conditioned with state-of-the-art equipment that creates electricity as you exercise. Intelligent equipment converts the watts generated to AC power and is sent back through the grid to offset energy costs. Students can take advantage of our on-site gym facilities, with free access on Wednesday afternoons as part of enrichment.



science laboratories

Our dedicated chemistry, physics, biology and pharmacy labs are designed to help students develop practical work skills. These industry-standard spaces allow course-specific study with access to a range of specialised equipment.

The Hub

5 skill areas; 4 strands; 1 you

We are here to support your development as an individual and aid you in achieving your ambition.

5 key areas:

We focus on developing students':

- **Academic skills** - all things assignments and writing to get the best grades possible.
- **Independent skills** - tools and skills you need to be autonomous and less reliant on your teachers, keeping you at the top of your game.
- **Digital skills** - we use Google and lots of apps that help you become digitally savvy.
- **Future-ready skills** - getting you ready for the next step or improving your employability.
- **Digital sense** - understanding your digital world, online footprint, cybersafety and more.



4 strands:

The learning hubs (formerly Learning Resource Centre)

Our learning hubs are the ideal space for independent study, quiet reading or having a 1:1 with a tutor. With access to over 20,000 ebooks, as well as novels, graphic novels and learning resources, the hubs are a perfect place to find inspiration.

1:1 support

Any student can request a private chat with a learning mentor, as can a member of staff who has a concern about an individual. The focus is on you as an individual, this is your time and you can discuss the area you need help with.

In-class sessions

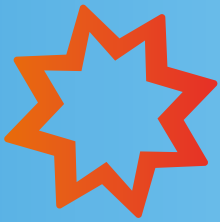
We work closely with teaching staff to deliver lessons that will build your confidence and prepare you for life beyond further education. Using different techniques such as games and activities, topics are presented in a way to help you grow as an independent learner.

Outside the classroom

We hold regular competitions and activities. Whether it's a reading challenge or pixel art competition, there's an opportunity for everyone to take part. We also feature on the enrichment timetable and deliver study sessions, covering important skills from research to referencing.

1 you:

Our goal is your goal. We're here to work with you so you can get the most out of your time at Leeds Sixth Form College and realise your dreams.



Entry Requirements

The general entry requirements to our A level programmes are five GCSEs, including English and Maths, at grade 9-4 or equivalent.

Specific subjects may require grade 5 or above in GCSE English or Maths. Please refer to our *Entry Requirements: at a glance* page to check the requirements for each subject.

If you have any questions regarding entry criteria for any of our courses, feel free to call and speak to a member of our Course Enquiries team.



course enquiries team:
0113 532 4428 | courses@leedssixthform.ac.uk

turn over for
more details 

Entry Requirements: at a glance

The general entry requirements are five GCSEs graded 9-4, including English and maths (or equivalent) and two additional GCSE qualifications at grade 9-4 or BTEC equivalents. Grade 4 is equivalent to a grade C.

For subject-specific entry requirements, please see the table below.

A Level course	General entry requirements	Additional entry requirements
Art, Craft & Design	Five GCSEs 9-4, including English and Maths	Grade 9-4 at GCSE in an art-based subject and a portfolio is required for interview
Biology	Five GCSEs 9-4, including English and Maths	9-5 in GCSE Biology or 9-5 in GCSE Combined Science and a 9-5 in GCSE Maths
Business	Five GCSEs 9-4, including English and Maths	9-5 in GCSE Maths
Chemistry	Five GCSEs 9-4, including English and Maths	9-5 in GCSE Chemistry or 9-5 in GCSE Combined Science, and a 9-5 in GCSE Maths
Computer Science	Five GCSEs 9-4 including English and Maths	9-5 (desirable Grade 6) in GCSE Maths
Core Maths	Five GCSEs 9-4 including English and Maths.	9-4 in GCSE Maths
English Language	Five GCSEs 9-4, including English and Maths	9-4 in GCSE English
English Literature	Five GCSEs 9-4, including English and Maths	9-5 in GCSE English
Film Studies	Five GCSEs 9-4, including English and Maths	

French	Five GCSEs 9-4, including English and Maths	9-5 in GCSE French and a 9-5 in GCSE English
Further Mathematics	Five GCSEs 9-4, including English and Maths	9-7 in GCSE Maths
Geography	Five GCSEs 9-4, including English and Maths	9-5 in GCSE English or GCSE Geography
History	Five GCSEs 9-4, including English and Maths	9-5 in GCSE English or GCSE History
Law	Five GCSEs 9-4, including English and Maths	9-5 in GCSE English
Maths	Five GCSEs 9-4, including English and Maths	9-6 in GCSE Maths
Media Studies	Five GCSEs 9-4, including English and Maths	
Music	Five GCSEs 9-4, including English and Maths	GCSE Music 9-5 and/or grade 5 in practical and grade 3 theory
Philosophy	Five GCSEs 9-4, including English and Maths	9-5 in GCSE English
Physical Education	Five GCSEs 9-4, including English and Maths	9-5 in GCSE Combined Science or GCSE Physical Education. Must also be playing sport at a competitive level
Physics	Five GCSEs 9-4, including English and Maths	9-5 in GCSE Physics or 9-5 in GCSE Combined Science, and a 9-5 in GCSE Maths
Psychology	Five GCSEs 9-4, including English and Maths	9-5 in GCSE English and two separate science subjects, or Combined Science
Religious Studies	Five GCSEs 9-4, including English and Maths	9-5 in GCSE English
Sociology	Five GCSEs 9-4, including English and Maths	
Vocational Courses - to be combined with A levels		
Applied Science Level 3	Five GCSEs 9-4, including English and Maths	9-4 in GCSE Combined Science
Applied Science Level 3	Five GCSEs 9-4, including English and Maths	9-4 in GCSE PE

Pathways

Pathway	Entry criteria	Curriculum - courses
Omega	6+ GCSEs	Three A levels over two years (possibly four depending on progress). N.B. Applications for Medicine, Veterinary Medicine, Dentistry or Oxbridge and Russell Group universities will require at least two traditional subjects - e.g. Maths, Further Maths, English Literature, Physics, Biology, Chemistry, History, Geography and Modern Foreign Languages.
Zeta	5+ GCSEs	Three A levels over two years in a choice of subjects.
Gamma	4+ GCSEs	Two A levels over two years in a choice of subject, plus one vocational diploma in either Sport Science & Exercise or Applied Science.
Delta	Initial Assessment	Designed for students aged 16-18 who aspire to study A levels but do not have the GCSE requirements to do so. Students will study a package of five GCSEs in Year 1 and, on successful completion at grades 9-4, will go on to study A levels in Years 2 and 3.

Delta (five GCSEs programme only)

For this pathway, there are no fixed entry qualifications and applicants may or may not have previously studied GCSEs. Our experienced staff will consider each individual's educational background, qualifications and experience.

Students entering Leeds Sixth Form College will follow one of four pathways and they will be advised which pathway best suits their ambitions during an initial guidance interview. The pathways on offer are detailed below.


Enrichment	Possible destinations (following completion of pathway)
<p>Extra and super-curricular student activities that enhance academic study, including Points Booster courses (EPQ or Core Maths); interview and entrance test preparation; and enrichment activities (volunteering, first aid and leadership).</p>	<p>Medicine, Veterinary Medicine, Dentistry, an Oxbridge or Russell Group universities degree, or degree apprenticeship.</p>
<p>Super-curricular student activities that enhance academic study, including Points Booster courses (EPQ or Core Maths) and enrichment activities (volunteering, first aid and leadership).</p>	<p>University degree at a Russell Group or other university, or a higher apprenticeship.</p>
<p>Super-curricular student activities that enhance academic study, including Points Booster courses (EPQ or Core Maths) and enrichment activities (volunteering, first aid and leadership).</p>	<p>University degree at various universities or a higher apprenticeship.</p>
<p>Five GCSEs following either a science or humanities pathway. Students who successfully complete Year 1 and have good attendance will progress to the two-year A level programme at Leeds Sixth Form College.</p>	<p>University degree at various universities or a higher apprenticeship.</p>

The main entry consideration is that students must have a reasonable chance of securing grade 4 or above in each of the subjects to be taken at the end of one year of study. Prospective students undertake English and maths assessments during the interview process.

Gamma Pathway

The Gamma Pathway is our new hybrid offer of two A levels and one vocational course. These excellent vocational diplomas are designed to dovetail perfectly with A levels. They are an ideal springboard to high-quality HE courses, providing specialist content and supporting progression on to further study.

If you are interested in the Gamma Pathway, you will need to choose a vocational course from either the School of Sport Science & Exercise or the School of Applied Science.



find out more at
leedssixthform.ac.uk

two a levels



one vocational
course



a pathway to
✦ success ✦

Sport Science & Exercise



If sport is more than a game to you, consider studying a sports-related course and see how your favourite sport could become your career. Studying a course in sport not only equips students with practical and theoretical sports knowledge, it also covers important topics such as physical fitness, exercise and competitive performance. A course in a sport-related subject can lead to a multitude of varied careers, ranging from fitness training to leisure centre management; teaching to sports massage therapist.

Sport plays an important part in a healthy lifestyle. With exercise known to have positive benefits on wellbeing, this is an exciting and relevant subject area in which to study. With jobs in the industry on the increase, sport really can set you up for life.

If you are interested in pursuing a career as a professional athlete, check out Leeds Sports Connect - where training for those serious about a career in sport is partnered with academic teaching. For those interested in pursuing the Gamma Pathway, the School of Sport Science & Exercise offers an excellent range of courses which will set you on the path to a career in sport.

Course	Level	Study length
BTEC National Extended Certificate in Sport	3	This is a two-year course.
<p>Study for the Extended Certificate in Sport and enhance your knowledge, skills and understanding across a range of sports topics such as anatomy, fitness training and sports leadership. You will also explore career pathways within the sector. There are four units in total, of which two are externally assessed. This course is equivalent to one A-Level.</p>		

For those interested in pursuing the Gamma Pathway, please visit leedscitycollege.ac.uk/schools/school-of-sport-science-exercise to find out more about the courses you will study alongside your A level choices.

Applied Science



Science is a fascinating and vitally important field of study. In a constantly evolving world, scientific exploration, discovery and creation are key to ensuring humans evolve to meet new challenges and battle existing difficulties.

Core scientific subjects of biology, physics and chemistry offer a base of knowledge with which students can specialise after A level. Careers in science are plentiful and wide-ranging - from medicine to mechanics, farming to fitness, a course in science could lead anywhere in the world (or beyond!).

Applied science encourages exploration and investigation, preparing the scientists of tomorrow for work in a number of fields. With an emphasis on practical work, students get to test the theories they have learnt in state-of-the-art facilities. With dry and wet laboratories, and cutting-edge scientific equipment, students gain relevant experience of working within a scientific environment.

Courses prepare students for careers as varied as nursing and chemical engineering, laboratory technicians and aeronautics. With the wealth of opportunities science unlocks, an applied science course really could take you anywhere.

Course	Level	Study length
BTEC National Certificate in Applied Science	3	This is the first year of a two-year course. You will study the Extended Certificate in your second year.
<p>Get ready to put scientific theories into practice as you study biology, chemistry and physics in our practical state-of-the-art laboratories. You'll explore specific areas of science such as diseases, physiology, genetics, astronomy, and more. You'll also strengthen your application of organic and inorganic chemistry, develop practical and experimental techniques, and build up your analytical and research abilities. At the end of this course, you'll walk away with a National Certificate that's equivalent to half an A level.</p>		

Course	Level	Study length
BTEC National Extended Certificate in Applied Science	3	This is the second year of a two-year course.
<p>Work towards a career in chemistry with this exciting Applied Science course that upgrades your National Certificate to an Extended Certificate, giving you a full diploma. You will expand on your scientific knowledge in biology, chemistry, physics, diseases and infections. You'll explore key and interesting topics such as biological molecules and metabolic pathways, as well as studying and discussing contemporary issues in today's science world. You'll also learn about experimental design and statistical analysis, and will walk away with a full diploma that's equivalent to one A level.</p>		

Included above is an overview of the courses you will study alongside your chosen A levels, should you choose the Gamma Pathway. For more details regarding these courses, please visit leedscitycollege.ac.uk/schools/school-of-applied-science

The Application Process



1 apply

Apply by completing our online application via the Leeds Sixth Form College website.



2 review

Each application received is then reviewed by our expert staff.



3 open event

Why not come along to an open event?
They are a great opportunity to speak to tutors, see our campus, experience some A level lessons and find out if Leeds Sixth Form College is right for you.

4 interview

You will be invited to a formal interview which will include specialist advice and guidance, ensuring you get the best opportunity to achieve.



5 offers

Offers are made following an interview and are conditional, based on you achieving the relevant GCSEs or requirements agreed at interview.



6 bridging day

You will be invited to a 'bridging day' where you will meet staff, experience some A level lessons and view our facilities.



7 enrolment

An invitation and enrolment pack will be sent out at the beginning of August, giving you all the information you need to enrol.



“ at Leeds Sixth Form College, you will be provided with plenty of support to help you maximise your potential. ”

Academic and Pastoral Support



Time is allocated in your timetable for peer study groups or 1:1 coaching sessions with a tutor. These sessions allow you to share ideas and receive support with your studies.

Student wellbeing

If you are experiencing personal difficulties that may affect your studies, you can access specialised 1:1 support. This support is available from our dedicated Pastoral team.

We also provide drop-in help sessions to support with studying, revision and exam preparation - ensuring you are fully equipped to succeed.

You can also engage with an array of enrichment activities to build friendships, pursue your personal interests and contribute to the student body.

Work experience and preparation for the world

All students in their first year of A levels will undertake a week-long work placement in an area relevant to their future progression. In addition to this, there are opportunities to volunteer.

This practical experience can boost your UCAS application and equip you with the working knowledge necessary for higher education or employment.

Financial Support

There are lots of ways we can support you with course-related costs such as travel passes, free lunches and college equipment. More information can be found on the college's Financial Support page.

Some of the financial support we offer includes:

- free lunches
- stationery
- support funds
- travel passes
- bursaries
- equipment
- trips
- childcare



Enrich



→ and Excel

We are a highly aspirational college and believe you are able to achieve your personal best and go further than you could imagine. You will leave as a well-rounded individual having enjoyed a rich and varied programme of study and enrichment activities.

Many students will also complete 'points boosting' subjects, such as the Extended Project Qualification and Core Maths to improve their applications to employment, university and apprenticeships.

Recognising that there is more to sixth form education than a piece of paper, we run an extensive range of extra-curricular and super-curricular activities and you will take part in one of each type each term. These activities will not only help build your confidence and enrich your learning experience, they are also a positive addition to university and job applications.

Enrichment activities fall into two categories: extra-curricular activities where you will take part in pursuits and interests in addition to your academic studies, and super-curricular activities that take your academic study to a higher level and demonstrate a real commitment to a subject.



Wide ranging in scope, below are a few examples of super-curricular activities that are on offer:

- Astronomy Society
- Forensic linguistics
- Horror fiction writing
- Legal podcasting
- Social Science Research Club
- Young Medics

With something to capture the interest of every student, below is just a few of the activities on offer:

- Biology Olympiad
- Board games - competition vs cooperation
- Book Club
- Confidence building (public-speaking lessons)
- Driving theory
- Duke of Edinburgh Award
- EPQ
- Exploring Leeds
- Filmmaking
- Football (male and female sessions available)
- Maths Challenge
- Preparation for leadership
- Pride - a moment in time
- Prom Committee
- Scholar Scheme
- Self-defence
- Sport and fitness
- STEM Club
- Volunteering



Student Safety & Relations Officers (SSROs)

All our staff are dedicated to ensuring you get the best education and leave with the life skills that will see you reach your goals. To support and encourage you in your development, we have a team of Student Safety and Relations Officers.

who we are and what we do

What we do:

Our aim is to enhance the student experience, supporting and encouraging your development as a young adult. We help you reach your full potential, focusing on key areas such as self-awareness, independence and individuality. SSROs also focus on fostering positive behaviours between you and your peers and you'll see them greet you as you enter the college, providing positive affirmations as you start your day. SSROs also engage with you through extra-curricular and cultural activities via the Campus Engagement Programme and enrichment afternoons every Wednesday.

The Campus Engagement Programme (CEP):

The CEP is an activity-based programme aimed to provide students with the tools and knowledge they need to develop as a young adult. The programme strengthens character, promotes individuality and widens their viewpoint by introducing students to different cultures. Through developing these life skills, students are driven to achieve academically and beyond the curriculum.

How you can get involved:

As well as welcoming you to your day, SSROs have their offices located in the student social areas where you can approach them should you have queries or want to talk. Activities are often held during lunchtime in these student social spaces to encourage you to get involved and get the most out of your college experience.

Information for Parents and Guardians



At Leeds Sixth Form College, we value the relationship we have with our parents and guardians. We recognise the part you play in supporting your child during their education and the importance of keeping in touch with you throughout their time with us. As well as providing regular updates on your child's academic progress, we also want to make it straightforward for you to contact us should you have any queries. Our contact information is on the next page.

Parents' Welcome Evening

Each student will be assigned a personal development leader who will meet with them weekly for a tutorial and be there to support them over the duration of their course. Personal development leaders are responsible for monitoring your child's progress and development, and will support your child throughout their time at Leeds Sixth Form College.

You will have the opportunity to meet your child's personal development leader at our Parents' Welcome Evening in October. You can also contact them at any time throughout the year to arrange a meeting should you have any queries or concerns.

Parents' Evenings

In addition to the welcome evening, we hold parents' evenings at key stages in the academic year for all A level students. This is where you will be able to discuss your child's progress with their subject teachers.

Parents' Progression Evening

The Parents' Progression Evening is your chance to learn about the opportunities available to your child upon completion of their course. You can speak with experts who can offer advice regarding 'next steps' and discuss how your child can maximise their potential.

Parental reports and correspondence

At any time throughout the year, you can access our online portal via our website to find information regarding your child's attendance, progress and assessment grades for each subject.

If your child is below 18 years of age, we will send you a full written report on their progress in each of their subjects. This report will include individualised feedback from each tutor.

You will also receive our termly newsletter brimming with good news stories, upcoming events, opportunities for your child and what's been happening around campus.

We also want to welcome you to share the success of our students at events held throughout the year. The annual Leeds Sixth Form College Award Evening, for example, is an important date in the calendar to which you are warmly invited.





Contact Information

If you're looking for more information, you can visit our website: leedssixthform.ac.uk, or if you'd rather speak to someone, we have a dedicated team who will be more than happy to answer any questions or talk you through your options.

Our contact centre is open:


Monday - Thursday, 8.30am-6pm


Friday, 8.30am-5pm

Social Media

Stay up-to-date with our latest news at Leeds Sixth Form College by following us on social media.

 /leedssixthform

 @leedssixthform

 Leeds Sixth Form College

just call
0113 532 4428

or email
courses@leedssixthform.ac.uk

**Your path to
professional sport
starts here.**

LEEDS SPORTS  CONNECT

**Leeds Sports Connect
brings together
academic excellence
and sporting prowess
to enable you to pursue
your passion for sport
without compromising
on academic choices.**



Together with our partners...



...we can kick-start your career in sport.

Working with professional sports clubs, Leeds Sports Connect will help you reach your potential in your chosen field. Specialising in football, rugby, netball, boxing and basketball, you will train with like-minded athletes, learn from those who have coached the best and progress in your sport.

We understand the importance of commitment when it comes to sport and that's why your courses are designed around training schedules and skills that translate to the pitch, court or the ring. You will train at professional-level facilities, taught by specialist coaches who will help you develop as an athlete.

**Interested in seeing
how you can progress
in the sport you love
whilst studying for the
qualifications you want?**

**Find out more at
leedssportsconnect.co.uk**



Course Directory

We are constantly updating our courses to meet the labour market and industry needs.

We will be introducing a number of new courses very soon, to give students a choice and opportunity to broaden their communication skills in a competitive market.

Visit our website for the most up-to-date course information.



looking to study
A levels with practical
learning opportunities?
see our Gamma
Pathway on pg. 26

Art, Craft & Design

Hone your artistic skills with this comprehensive A level course which will give you grounding in the fundamentals of art, craft & design. At the end of the first year you will specialise in your chosen field of photography, fine art, graphics, textiles or 3D - allowing you to focus on two main projects in the second year.

In the first six weeks of this course you will be equipped with the basic foundation skills and knowledge you will need over the next two years. Covering topics such as observational photography, digital editing, observational drawing and colour theory printmaking, this induction will give you the tools needed to progress.

Year 1 culminates in an independent cross-disciplinary investigation which sees you take your chosen specialism (photography, fine art, graphics, textiles or 3D) and form a project around this. The project will see you develop, refine, record and present your ideas; showcasing the skills you have learnt over the previous seven months.

Year 2 sees you fully focused on your chosen specialism and consists of two main projects. The first, a personal investigation, gives you the chance to produce a project looking into a topic of your choice within your chosen specialism. This project is worth 60% of your final grade. The second is set by the exam board, AQA, and culminates in a 15-hour practical exam. This accounts for 40% of your final grade.

Entry requirements

Grade 9-4 at GCSE in an art-based subject. A portfolio is also required at interview.

Progression routes

This course can lead to a variety of career routes depending on your specialism. Examples include art, graphic design, fashion design, animation, commercial photography, illustration, product design, advertising, architecture and marketing.

“I chose Leeds Sixth Form College as it helped me take my knowledge and skills to the next level.”



Biology

A level Biology is designed to develop an understanding of various key biological systems. These systems include the components of cells, the molecules which make up living organisms and the reactions between them. It also compares the systems found in plants and animals which are necessary for life.

In the second year, a more integrated approach to considering biological systems is needed, as we learn about how different parts of the body and various populations interact in the topics of communication and ecology.

Throughout the course, you will develop a variety of investigative practical skills, including the use of scientific equipment, data presentation and analysis, and technique evaluation.

The course is assessed by examination at the end of the second year. You will also work on an ongoing practical portfolio consisting of required experiments, which will be reported separately in the results.

Entry requirements

Grade 9-5 in GCSE Biology or grade 9-5 in GCSE Combined Science, along with grade 9-5 in GCSE Maths.

Progression routes

More than 70% of last year's A level Biology students are applying for biology-related university courses. We have excellent progression rates to university with students gaining places on biology, neuroscience, food and nutrition, and medical courses.



“I chose Leeds Sixth Form College as it sees the potential in its students and can provide me with a first-rate education.”

Business

A level Business is about understanding how businesses start and how they succeed by adapting to an ever-changing world.

You will gain strong business understanding by studying topics including business objectives and strategy, entrepreneurship, global business, marketing, finance, human resources, and operations management. You will also look at how and why a business is set up and how external variables influence success.

You will be introduced to business operations and look in depth at the various functional areas needed for a business to succeed. Theory will be related to real-life and case-study scenarios.

This course may involve a mix of assignments and examinations, and there will be an increased push towards exams as the preferred form of assessment. This A level can lead to multiple management level roles in a variety of contexts.

Entry requirements

Grade 9-5 in GCSE Maths.

Progression routes

Many students go on to study business-related degrees, such as business management, business and finance, logistics and supply chain management, events, management and enterprise. **This course can also provide a useful foundation to pursue entrepreneur-related careers and interests, including setting up your own business.**



Meet the Students



“ the teachers are friendly and helpful and are always ready to answer your questions. ”

Student, Nicholas Sappor Charles, credits strong support from his tutors for helping him take important steps towards medical school.

Nicholas, who moved to the UK from Ghana, is also grateful for the flexibility that Leeds Sixth Form College has granted him as he works towards his goal.

His first experience of the college was when he enrolled on the Access Foundation GCSE programme last year. He ended up completing that course with six GCSEs, including in Combined Science Synergy - a double qualification which combines biology, chemistry and physics.

Nicholas is now busy studying chemistry, biology and maths A levels – and is grateful for all the guidance he has received.



The benefits of a flexible approach

He said: “Leeds Sixth Form College has been a good experience so far. I enrolled on the Access GCSE course after speaking with a career advisor at college, who told me what I needed to do to get into medical school.

“I was enrolled on a five GCSE programme but, in order to increase my chances of getting into as many universities as possible, the college also allowed me to do one extra GCSE, in business.

“I was very grateful for that opportunity. It was a bit tricky because timetables would clash, but my tutor was always there to help and explain things, plus give feedback on tests.”

An enriching and welcoming environment

Nicholas is also appreciative of the many enrichment activities that the college has arranged during his A level studies, and for making him feel welcome.

He said: “The teachers are friendly and helpful and are always ready to answer your questions. I am also highly impressed by the number of opportunities – including work experience, massive open online courses, and virtual skills development programmes – they try to make available to us.

“I was shy and a bit anxious due to the change of environment when I came to the UK, but college has really helped me grow in confidence and made me feel like I belong.”

chemistry

The study of chemistry is driven by the desire to explain the behaviour of the materials around us. You will study in our specialist laboratories, developing a greater understanding of the general principles of chemistry and of a discipline that remains at the forefront of scientific development.

You will study an array of practical and theoretical modules. These include Development of Practical Skills, Foundations in Chemistry, Period Table and Energy, Core Organic Chemistry, Physical Chemistry Transition Elements, and Organic Chemistry and Analysis.

You will develop skills in processing data, as well as wider mathematical and numeracy skills. In addition, you will learn how to safely handle hazardous materials and scientific equipment. There will be an increased push towards exams, as it is the preferred form of assessment. This course may also involve a mix of assignments and examinations.

Entry requirements

Grade 9-5 in GCSE Chemistry or grade 9-5 in GCSE Combined Science, along with grade 9-5 in GCSE Maths.

Progression routes

Chemistry is an essential requirement for progression on to many science-based degree courses, including veterinary science, medicine, pharmacy, forensics and chemical engineering. A level Chemistry is also a desirable qualification for employers, particularly in science and technology sectors.

“I chose Leeds Sixth Form College as there’s no limit to how far it can take me.”



Computer Science

A level Computer Science focuses on the skills and techniques of computing. It teaches you how to program in a technical programming language, whilst developing a range of computing skills and knowledge ready for progression to higher education or employment.

You will learn to analyse problems in computational terms through practical experience of problem solving, including writing computer programs. You will develop your understanding of the mathematical skills linked to computer science, such as Boolean algebra and algorithm comparisons.

You will also develop an understanding of the fundamental principles and concepts of computer science, and how to apply them to different contexts. These include abstraction, decomposition, logic, algorithms and data representation. During assessment, you will need to demonstrate your ability to draw together your knowledge, skills and understanding.

Entry requirements

9-5 (desirable grade 6) in GCSE Maths. You will need a systematic and logical approach to problem-solving and are recommended to take A level Maths alongside this course.

Progression routes

As computers are such an integral part of the workplace, A level computing skills are in extremely high demand. A level Computer Science will prepare you for many university courses in computing, software, engineering, business and computing, and computer graphics.

“I chose Leeds Sixth Form College as I am treated as an adult and encouraged to express myself.”



Core Maths

Core Maths is a one-year course that allows you to retain, expand and develop your knowledge and skills from GCSE, as well as giving you the opportunity to study and apply new Level 3 material.

Core Maths is made up of three key skill areas: Linear Programming; Statistics; and Probability. These key skills are applied in contexts that include scenarios encompassing a wide variety of careers.

Core Maths will also enable you to develop the mathematical, quantitative and statistical skills to be better prepared for work, life and further study. Studying this qualification develops logical and reasoning skills that are widely respected.

Entry requirements

Grade 9-4 in GCSE Maths.

Progression routes

Core Maths is a subject that is useful to support a degree that requires proficiency with mathematical methods. The logic and reasoning skills developed by studying A level Maths ensure the qualification is widely respected.

“I chose Leeds Sixth Form College as it offers a more personalised experience than school...”



English Language

You will study a range of language topics and learn how to analyse different texts, including conversations generated by modern technology. The course covers thought-provoking topics such as gender, accent and dialect, and occupational English.

In the second year, the core modules are Language Change and Language Acquisition. Language Change includes the history of English from its beginning around 500 AD, while Language Acquisition details how children learn to speak, read and write. As part of the Language Acquisition modules, you will look at work from linguists such as Noam Chomsky and B.F. Skinner.

You will also adapt your writing skills to suit various formats, such as articles, essays and analyses. Analytical skills are essential to further study in all subjects and you will develop these by critically comparing texts.

Entry requirements

Grade 9-4 in GCSE English.

Progression routes

Students with an A level in English Language study a wide range of subjects at university, as the skills developed are transferable. You could go on to study humanities, social science, English, journalism or creative writing.

“I chose Leeds Sixth Form College as there are more subjects to choose from than school and I can study what I enjoy.”



English Literature

A level English Literature will teach you how to analyse complex literary issues with the help of important critical ideas and theories.

You will read, reflect and evaluate, then express your conclusions in an eloquent and precise way. These skills are very important in a wide range of jobs, forming the core of further literary study at university.

A level English Literature seeks to offer a wide range of engaging texts, from Shakespeare to 20th and 21st century novels. You will read and study these texts through the lens of genre (such as tragedy, social analysis, crime fiction) and critical theory (Marxism and feminism), experiencing both the teacher-led and independent study of literature in its historical and cultural context.

This approach also includes a range of wider reading, thereby extending your experience and appreciation of literature.

Entry requirements

Grade 9-5 in GCSE English.

Progression routes

A level English Literature offers superb preparation for university courses in English (it is highly regarded by higher education institutions including Oxford and Cambridge). It provides a degree of analytical rigour and cultural knowledge, appropriate for a wide range of careers.



“ I chose Leeds Sixth Form College as it helps me improve my knowledge and go further than I realised. ”

Film Studies

Film Studies is a lot more than 'just watching films'. It involves adopting a critical perspective that allows you to view a variety of other genres through a fresh pair of eyes.

You will analyse the meanings of key scenes and sequences, exploring how ideologies are incorporated and how different contexts impact on the production and interpretation of a film. You will also learn how films are specifically constructed to generate particular meanings and responses across a diverse range of categories, including Old Hollywood, European Cinema and Experimental Film.

For each film studied, you will explore its aesthetics and how it manages to manipulate emotions, while applying theoretical and critical approaches to get to the core of the text. You will also learn to debate and question the intentions of directors - bearing in mind the impact of contextual factors - allowing you to build your communication and debating skills, along with your essay-writing technique.

Film Studies has a 30% production element where you will put into practice all you have learnt to create your own short film. This will allow you to evidence your ability to be creative, demonstrate your understanding of the technical features of filmmaking, and the all-important relationship between the film and the audience.

Entry requirements

Five GCSEs at 9-4, including English.

Progression routes

A level Film Studies allows many students to study film at university level. It also equips students with transferable skills such as critical thinking and sophistication of thought - making it helpful for a wide range of creative and academic courses including journalism, history, English literature, American studies, and PR and marketing.



“I chose Leeds Sixth Form College as it’s right in the heart of a vibrant and cosmopolitan city where I can discover new experiences.”

French

A level French will teach you how to analyse complex literary issues with the help of important critical ideas and theories.

Studying French at A level is more than just improving your holiday conversation skills. It is beneficial for improving job prospects in a global market. French is taught in all five continents and is the official language of many international organisations.

The course will see you increase your written, reading, speaking and listening skills through contemporary topics. You will learn to converse about complex family lives and political issues, including diverse societies, criminals and law.

These skills are very important in a wide range of jobs, forming the core of further literary study at university. French is an asset for political careers, journalism and foreign affairs. Through studying French, you will be exploring the many facets of French-speaking nations, including Africa, Canada, the Caribbean and France.

Entry requirements

Grade 5 in GCSE French and four additional GCSEs, including grade 5 or above in English. Native speakers without a GCSE in French will also be considered for interview.

Progression routes

Studying languages at A level can unlock a series of opportunities in both academic and vocational pathways. Languages can be combined with other subjects to study at university in the form of 'combined degrees', therefore not limiting you to only doing interpretation or education. Students who follow combined degrees with languages have positive destinations in a number of sectors such as sales, banking and finance, and manufacturing. Language skills are highly valued in industry, especially in the existing global market.

“I chose Leeds Sixth Form College as the tutors have more industry experience and love teaching their subjects.”



Further Mathematics

The skills gained from studying a science, technology, engineering or mathematics (STEM) subject at A level (or degree level) are in demand by employers. Graduates from STEM subjects earn on average 5% to 10% more than those who studied other courses.

A level Further Mathematics introduces you to new topics such as matrices and complex numbers that are vital in many STEM degrees. Further Mathematics is a challenging and rewarding subject, which deepens your knowledge and understanding beyond the standard Mathematics A level.

As well as learning new areas of mathematics, you will study further applications of it in pure and decision mathematics.

Entry requirements

Grade 9-7 in GCSE Maths.

Progression routes

A level Further Mathematics is highly regarded by universities. If you're planning a degree in areas such as engineering, science, computing, finance, economics or mathematics, you will benefit enormously. Many university engineering and mathematics courses list A level Further Mathematics as 'essential' or 'desirable'.

“I chose Leeds Sixth Form College as it has more connections with universities than school and can help me make the best decisions for my future.”



Geography

Geography is the study of Earth's landscapes, people, places and environments, bridging the social and natural sciences. A level Geography develops an understanding of a wide range of physical and human geographical issues such as globalisation, inequality and climate change.

Field trips are an integral part of the course and relate to modules you will study, such as Coasts and Coastal Landscapes, Hazards, Changing Places and Contemporary Urban Environments. You will use fieldwork to research sociological and economical influences on places and environments, and will visit places in and outside of Leeds to build experience of undertaking research - forming the foundation of your coursework. Day trips take place in both years, with a residential field course in the second year (last held in the Lake District).

In addition, you will develop a range of skills, including understanding and interpreting statistics, research methods and cartography (the study of land). You will also have ample opportunities to discuss your own attitudes regarding contemporary issues, whilst suggesting solutions.

This course is marked in three sections and features exams at the end of the second year, contributing to 80% of your grade. The final 20% comes from your fieldwork project, which can be undertaken on a wide variety of topics - from the 'Geography of Happiness' (is happiness determined by our location?) to investigations of the intensity of urban heat islands.

Entry requirements

Grade 9-5 in GCSE English or GCSE Geography.

Progression routes

There are many job opportunities for students as employers welcome the skills achieved in this A level. Geography has a good reputation with universities and combines well with science and humanities degrees. A level Geography can lead to further study of subjects such as environmental science.

“I chose Leeds Sixth Form College as it takes progression to the next level by offering multiple pathways.”



History

This course introduces you to some of the most important subjects and problems in British and European economic, political and social history over the last 200 years. It's a great way to understand how the world we live in has evolved and provides fantastic opportunities for you to build your own arguments around the interpretations of our past.

A level History is made up of three components: the first is a breadth study, looking at the Tudors and the changes that took place over that period. Component two involves an in-depth study of post-1945 America; whilst the final component is a coursework module, where students will study Russia between 1855 and 1964.

You will develop your ability to analyse sources, develop arguments, research and construct essays, problem-solve and think critically.

Entry requirements

Grade 9-5 in GCSE English or GCSE History.

Progression routes

The critical analysis skills that you will develop enable progression on to careers such as law, journalism, marketing and business, management and teaching. Alternatively, you could pursue specialist occupations such as archaeology, historical research and museum curation.



“ I chose Leeds Sixth Form College as there’s access to more facilities such as the sports academies and Leeds City College Students’ Union. ”

Law

Studying A level Law provides you with the opportunity to gain a real insight into our legal system - the framework that underpins our society - and how this affects ordinary citizens. You will gain an understanding of where our laws come from and how multiple legal cases reach a verdict.

In the first year of study, you will be given an introduction to criminal law and tort law. You will also study negligence and occupiers' liability. In the second year, you will deepen your understanding of tort law by looking at vicarious liability and defences.

In addition to this, you will study either human rights or look in depth at the nature of law in a wider context. This will develop your understanding of how the law interacts with morality, justice, society and technology.

Entry requirements

Grade 9-5 in GCSE English.

Progression routes

Many students study law at university and access careers in the legal system, as well as education and police sectors. Law also develops critical-thinking skills relevant to further study and employment. We have previously had students go on to study degrees at the University of Law.

“ I chose Leeds Sixth Form College as it's different to school and can help me grow not only as a student, but as a young adult too. ”



Maths

A level Maths provides you with a thorough grounding in the mathematical tools and techniques that are applicable to multiple maths-focused roles in the workplace. The modern world needs employers with an advanced level of mathematics skills, and maths is essential to the continued development of our increasingly technological lives.

The UK's knowledge economy (an economical system driven by ideas, intellectual capital and technology) needs more mathematical skills for the financial, communication, engineering and transportation sectors, as well as highly specialised scientific areas, such as genome modelling.

A level Maths is made up of four units. There are two core units which make up two-thirds of the qualification and provide you with techniques in algebra, geometry, trigonometry and calculus - forming the fundamental building blocks of the subject. Mathematical applications in statistics and mechanics make up the remaining third of the qualification.

Entry requirements

Grade 9-6 in GCSE Maths.

Progression routes

Maths can lead to various subjects at university, including science and engineering, as well as careers in data analysis and digital marketing. The logic and reasoning skills developed by studying A level Maths ensure the qualification is widely respected.



“I chose Leeds Sixth Form College as it offers more subjects than school and gives me the opportunity to learn about topics I’ve never studied before.”

Media Studies

We live in a media-saturated world, where every waking moment is either influenced or documented by the media - from TV to popular social networks. A level Media Studies helps you develop a critical understanding of how the media not only acts as a form of entertainment, but as a means of worldwide communication and representation.

Media studies revolves around debating meaning and intentions, developing your critical analysis skills. You will be expected to engage with a wide variety of media outside of the classroom to aid your understanding of its changing nature.

You will study a wide range of texts including TV, radio, online platforms, newspapers and video games. You will investigate each text in relation to its theoretical framework, deepening your understanding of how they are constructed to appeal and convey particular meanings to audiences. You will also explore how the media is influenced by cultural, technological or institutional influences, and how these different contexts impact upon an audience.

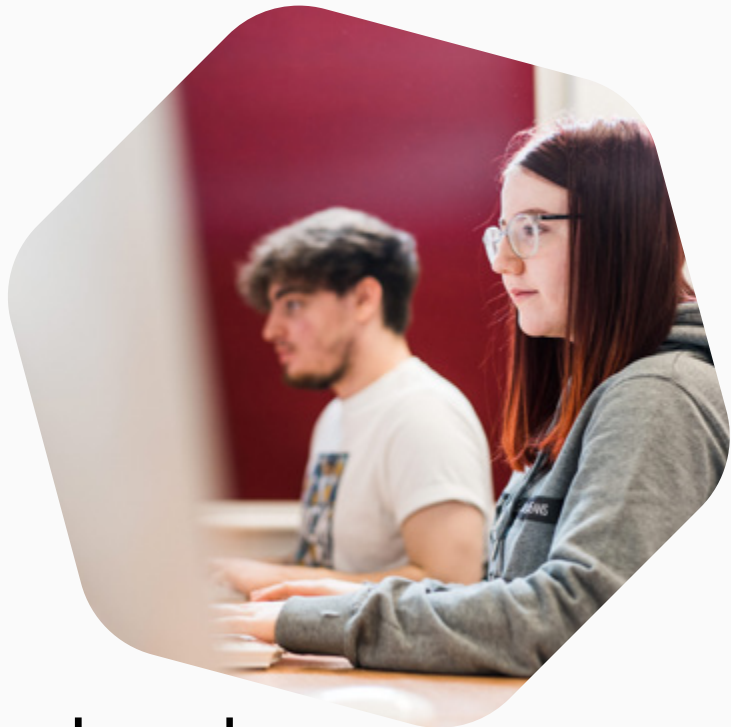
This course consists of a 30% practical production unit, which involves creating cross media products to a set brief. This allows you to showcase your creative ability, demonstrate an understanding of media 'codes and conventions', and establish a relationship between your audience and chosen media form. In previous years, briefs have included music videos, promotional material and opening sequences to popular teenage dramas.

Entry requirements

Five GCSEs at 9-4, including English.

Progression routes

The media is one of the fastest growing industries in the UK. Studying media enables progression on to general and specialised media courses, along with other creative courses such as film, marketing and PR. The transferable skills gained are also helpful for other academic courses such as journalism, English language or literature, business and communication studies.



“I chose Leeds Sixth Form College as other students are more engaged than at school and want to be on the courses they have chosen.”

Music

A level Music nurtures your musical ear and ability, providing you with the skills and knowledge required to create captivating compositions and performances. You will have the opportunity to cultivate your talent as a solo performer or as part of an ensemble, whilst gaining practical and theoretical understanding of musical techniques and devices.

The course forms a natural progression from GCSE Music or a Level 2 music qualification, and is taught by specialist staff who are all practising musicians.

You will combine your natural creativity with compositional techniques to create original musical compositions. You will also develop your aural perception skills and understanding of harmony, and will delve into different musical styles and contexts, whilst exploring the historical evolution of classical and popular music.

Entry requirements

Grade 9-5 in GCSE Music, or grade 5 practical and grade 3 theory (or equivalent) from a registered music awarding body such as ABRSM.

Progression routes

A level Music equips you with the skills needed to study music at university, pursue a music-related career and develop a lifelong appreciation of musical genres. Studying music at A level and degree level can lead to work in the music industry as a performer, recording or sound technician, A&R exec or teacher.

“I chose Leeds Sixth Form College as it takes enrichment to the next level. There are more societies, teams and activities to get involved in than school.”



Philosophy

The word ‘philosophy’ means ‘love of wisdom’, which is exactly what this course will give you. As a Philosophy student, you will study four major areas of philosophical thought, including epistemology (theory of knowledge) and moral philosophy, which considers the ethical theories coined by major philosophical thinkers and applies them to real-life scenarios.

The third major area you will explore is the Metaphysics of God. This asks you to consider whether the concept of God is coherent, whether the given attributes of God are compatible with evil, and whether the arguments for the existence of God are convincing.

The fourth unit, the Metaphysics of Mind, is where you will consider what the mind is and where it might be located. You will also explore the hypothesis that the mind is a separate substance from the body, along with all other issues and alternative explanations relating to this school of thought.

A level Philosophy will help you develop your evaluation, analytical and problem-solving skills, whilst strengthening your ability to research, write and debate in order to present complex ideas clearly and concisely.

Entry requirements

Grade 9-5 in GCSE English.

Progression routes

Philosophy is highly regarded by universities as it requires excellent analytical skills and comprehension of complex ideas. It combines well with theology, natural sciences, history, sociology and law. It can also lead to careers in the civil service, journalism, social work, teaching and charity work.



“ I chose Leeds Sixth Form College as I'm encouraged to push myself in an energetic and supportive environment. ”

Physical Education

A level Physical Education is a dynamic course that blends academic assessment with physical performance. You will develop theoretical knowledge of changes within the body before, during and after exercise. The course also provides practical insight into sports performance, and gives you the opportunity to coach in sport and explore the impact physical activity has on life.

You will become confident, resilient and knowledgeable as you acquire key academic and scientific skills, such as critical thinking, research methods and performance analysis. You will also study a range of topics including anatomy and physiology, exercise physiology, nutrition, sport psychology, biomechanics and identify how modern technology has an influence on sport, and on society.

This A level complements a range of other subjects including biology, physics, psychology, sociology and more. The transferable skills developed during this A level, such as decision-making and creative thinking, can be applied to multiple career paths.

Entry requirements

Grade 9-5 in GCSE Combined Science or GCSE Physical Education.
Must be playing sport at a competitive level.

Progression routes

A level Physical Education is an excellent base for a university degree in sports science, sports coaching, healthcare, teaching and sport psychology. It can open up a range of career opportunities including sports development, sports coaching, physiotherapy, personal training or PE teaching.

“I chose Leeds Sixth Form College as I'm seen as an individual, not just another number.”



Physics

Physics is an exciting subject which aims to explain how things work, from the smallest of particles to the vastness of galaxies and the universe. With this A level you will develop skills in physics, maths, technical writing, observation, measuring instruments, research and independent work.

Physics has become increasingly important in the world of work, changing our leisure time and the influence of technology. It solves problems, helps diagnose medical conditions, creates new materials, suggests possible solutions to the energy crisis and is the science behind the internet.

Topics covered at A level include the fundamental theories in physics. You will also gain insight into a range of subject matters, including atomic structure, astrophysics, radioactivity, particle interactions at the quark level, quantum physics, vectors, forces, linear motion and momentum, and material and thermal physics.

Entry requirements

Grade 9-5 in GCSE Physics or grade 9-5 in GCSE Combined Science, as well as grade 9-5 in GCSE Maths.

Progression routes

As a discipline, physics is used in many areas of industry, including engineering, health and biomedicine, public services, utilities, environmental monitoring, scientific research, astrophysics, education and computing to mention but a few. Physics will develop your problem-solving, research and analytical skills.



“I chose Leeds Sixth Form College as it has better work experience and progression links than school and can help me grow.”

Politics

Politics explores debates on political and social issues, current affairs and how decisions affecting society are made. You will gain an understanding of how democracy works in the UK and how it could be improved. You will also analyse the views of different political parties, individuals and groups.

The first year focuses on British politics, switching to US politics in your second year. This will help you make more sense of UK and international developments, whilst stimulating you to think critically and consider different points of view.

You will also study different political ideologies, such as socialism, liberalism, conservatism and feminism, and the way they aim to organise society. You will develop your analytical and debating skills, and will gain a deeper understanding of the way laws are made.

Entry requirements

Grade 9-5 in GCSE English.

Progression routes

Politics has plenty of progression opportunities as universities appreciate the critical-thinking skills you will develop. A level Politics is particularly recommended for students interested in studying law at university. Apart from law, politics also combines well with subjects such as history, sociology, and religious studies, and prepares for careers in the legal professions, journalism, politics, and management. Past students have progressed to higher education institutions including Cardiff University, a member of the Russell Group.

“I chose Leeds Sixth Form College as the tutors are more supportive and know exactly what qualifications I need to pursue my dream career.”





Meet the Students

* aiming for triple
As at A level *

A level student Junior Boateng takes his studies and his charity work seriously. Junior will sit exams in biology, chemistry and psychology in July and has set his sights high - aiming to achieve As in each.

Three A grades is what he needs to go on and study medicine at university, after which he hopes to specialise in orthopaedics.

But Junior has managed to balance those tough academic demands with volunteering in his spare time, to help some of Leeds' most vulnerable residents.

A supportive learning environment

He credits Leeds Sixth Form College for providing vital support for both pursuits. He said: "Leeds Sixth Form College is a good place to study because the teachers are always willing to help."



“They always make you aware that they are here to assist so when I don’t get stuff at first I know I can go to them and they’re happy to explain to me, whether that be in person or online. They are always very responsive.”

Junior’s charity work, meanwhile, is done through a church in Leeds and focuses on those who are living on the streets or have hit a low point.

Offering a helping hand

He said: “We seek out people who are in need and are easily forgotten by society.

“Through our Night Angels programme, for example, we go out around town in the evenings and meet homeless people who come for food and drink. You meet all kinds of people, sometimes even university students who are struggling.

“We also put up notes on the bridges around Leeds to give a message to those who might be despairing, so they know there’s somebody out there who cares and can help.

“The college has been very supportive of this work and when I was organising a foodbank drive, staff gladly helped by creating posters. Quite a few people also brought in donations, which really helped us be able to serve hot meals to people in need.”

Psychology

Psychology is the study of the human mind and behaviour. It explores key societal questions, such as why we conform to rules or obey authority figures. A level Psychology develops your knowledge of psychological approaches, theories, concepts and methods, along with how the science of psychology works. You'll explore case studies, learning how to draw parallels between the findings. You will also be introduced to important issues and debates that relate to contemporary psychological topics.

In year 1, you will study the major approaches to psychology, including exploring key items of research, investigating important studies related to that topic and uncovering how research is conducted in that area of psychology. You will learn to use statistical tests to help interpret data collected in class exercises.

Year 2 gives you an opportunity to study some uses of psychology in the real world. You will discover how the approaches you have studied come together to explain human behaviour.

Entry requirements

Grade 9-5 in GCSE English and two separate science subjects, or Combined Science.

Progression routes

A level Psychology can lead to degree courses including psychology, pharmacy, nursing, social work, counselling, business, personnel and teaching. Possible career routes include specialist areas of psychology, such as clinical, forensic, occupational and health. Students have previously studied psychology at a wide range of universities, including King's College London.



“I chose Leeds Sixth Form College as it gives its students more independence than school.”

Religious Studies

A level Religious Studies allows you to explore and debate a wide range of key topics, including the nature of God/gods, life after death, challenges posed by science, and the nature and role of religion. You will also delve into vital philosophical issues such as arguments for the existence of God, the nature of evil and suffering, religious experience and language, miracles and the nature of the self.

In addition, you will cover various aspects of morality and ethics, including religion and sexual identity, ethical theories, issues of human life and death, as well as animal life and death. Studying Religious Studies will help you develop clear ways of thinking, evaluation, problem-solving and research skills, and will strengthen your writing skills to present complex ideas in a clear, precise, well-structured manner.

Entry requirements

Grade 9-5 in GCSE English.

Progression routes

A level Religious Studies is a popular A level and is well regarded by prestigious universities. It can lead on to further study in fields such as philosophy and combines well with subjects including history and sociology. It can lead to careers in teaching, the civil service, charity work, counselling, journalism, social work and many others.

“I chose Leeds Sixth Form College as there are one-to-one sessions, academic coaches and drop-in revision sessions which I didn't have at school.”



Sociology

Have you ever wondered how we developed into the society we are today? Or how influential the media is on our life choices? Maybe you've asked yourself why men are statistically more likely to commit a crime? Or whether educational failure and success is a result of intelligence, or something more?

A level Sociology will address these questions through the examination of cultural relationships, social interactions and research. Sociology is the study of individual and institutional relationships within society. In order to try and understand society, thinkers employ scientific research to support their arguments.

You will learn various skills, including the use of evidence to support your arguments, how to apply evidence to support arguments, how to conduct research investigations, and develop critical-thinking skills. You will also develop a strong knowledge of society, alongside the ability to critically evaluate and analyse information. The relevance of sociology to everyone means your learning will be relevant to everyday life.

Entry requirements

Five GCSEs at 9-4, including English.

Progression routes

A level Sociology can lead to degree courses such as social science and humanities. The study of sociology could lead to careers in public relations, teaching, civil service, management and business, journalism, social work, probation service, youth and community work, or nursing.

“ I chose Leeds Sixth Form College as it's on a whole different level and there's no limit to how it can help me develop. ”



Spanish

A level Spanish will teach you how to analyse complex literary issues with the help of important critical ideas and theories.

Studying a language at A level is more than just improving your holiday conversation skills. It is beneficial for improving job prospects in a global market and can open up opportunities across the world. With Spanish being one of the most dominant languages used across the Americas and the Caribbean, it is an asset for political careers, journalism, foreign affairs and travel.

Through studying Spanish, you will be exploring the many facets of different Spanish-speaking nations, including Mexico, Argentina, Cuba and Europe.

You will discover a variety of artistic cultures from the varying Spanish-speaking countries, looking into music, film and literature, which will be included in an individual research project building on one of the themes studied throughout the course.

We build your written, reading, speaking and listening skills through contemporary topics of social and cultural trends and issues. You will read, reflect and evaluate, then express your conclusions in an eloquent and precise way. This enables you to converse about complex family lives and political issues, including diverse societies, criminals and law

Entry requirements

Grade 5 in GCSE Spanish and four additional GCSEs, including grade 5 or above in English. Native speakers without a GCSE in Spanish will also be considered for interview. Please see our entry requirements for more guidance.

Progression routes

Studying Spanish at A level equips you with the language skills to support further study at university. Language skills are highly valued in industry, especially in the existing global market.

“I chose Leeds Sixth Form College as it has a wider range of interesting subjects than school and inspires me to learn something new every day.”





20 sets of horizontal lines for writing.

Disclaimer: The information contained in this guide is accurate at the time of printing, but some changes may take place. Some variation may occur as a result of circumstances beyond our control. Please see our website leedssixthform.ac.uk for the most up-to-date information regarding our courses and support for students.

Design by Luminare Education Group
2022

Leeds Sixth Form College is a member of Luminare Education Group

leadssixthform.ac.uk